



Ayra machines



Table of contents

1.	GENERAL PRECAUTIONS AND WARNINGS.....	3
1.1.	General information	3
1.2.	Intended use of the machine	4
1.3.	Guarantee	4
1.4.	Packaging	5
1.5.	Machine identification.....	5
1.5.1.	Contacts	6
2.	COMPONENTS	7
2.1.	Part list.....	7
2.2.	Technical data	9
3.	TRANSPORT AND HANDLING	10
3.1.	Warnings for storage	10
3.2.	Removing the packaging and checking the contents	10
4.	INSTALLATION / POSITIONING AND FIRST TIME USE OF THE MACHINE.....	11
4.1.	Frost resistance	11
4.2.	Electrical connection.....	11
4.3.	Liquid Canister installation	12
4.4.	Ignition Procedure	13
4.5.	Operation of the machine.....	13
4.5.1.	Machine adjustment.....	13
4.5.1.1.	“Daily” setting:	14
4.5.1.2.	“Fast” setting:.....	15
4.6.	Timer Setting: “Aut” Mode (only for the models where it’s included)	15
4.6.1.	Set the current time.....	15
4.6.2.	Set the period of operation.....	16
4.6.3.	Inactivity	16
5.	REMOTE CONTROL OF AYRA SANITIZER. QUICK ADJUSTMENTS	19
5.1.	App PvRem	20
5.2.	App PvRamada	26
6.	SAFETY WARNINGS.....	31
6.1.	Child safety.....	31
7.	MAINTENANCE AND CLEANING	32
8.	DISPOSAL.....	32



Figure 1 Ayra standard



Figure 2 Ayra Trolley



Figure 3 Ayra mini

1. GENERAL PRECAUTIONS AND WARNINGS

WE CONGRATULATE WITH YOU FOR THE CHOICE OF A PROJECT VENDING MACHINE. THIS PRODUCT HAS BEEN DESIGNED BY EXPERIENCED TECHNICIANS AND IS BUILT ACCORDING TO THE HIGH-QUALITY STANDARDS THAT HAVE ALWAYS DISTINGUISHED THE PROJECT VENDING PRODUCTS. THIS PUBLICATION WILL HELP YOU GET TO KNOW YOUR APPLIANCE BETTER: WE RECOMMEND YOU TO READ IT CAREFULLY AND FOLLOW ITS ADVICE.

THIS DOCUMENT CONTAINS CONFIDENTIAL INFORMATION PROPERTY OF PROJECT VENDING. THE CONTENT OF THIS DOCUMENT MAY NOT BE DISCLOSED TO THIRD PARTIES, COPIED OR DUPLICATED, IN ANY FORM, IN WHOLE OR IN PART, WITHOUT PRIOR WRITTEN APPROVAL OF PROJECT VENDING. USE, TRANSLATION, DUPLICATION OR DISCLOSURE OF THE TECHNICAL INFORMATION CONTAINED IN THIS DOCUMENT MAY BE PROTECTED BY PROJECT VENDING THROUGH LAW.

1.1. General information

All the information contained in this manual is aimed at obtaining the best performance from the machine in the context of the use envisaged by the manufacturer.

This manual brings together all the notions and instructions for loading and cleaning the machine, as well as instructions reserved for specialized technicians for more complex operations.



This manual should be kept near the machine. To receive a new manual, in the event of loss or damage to the one supplied, it is necessary to communicate to the manufacturer the identification data of the machine shown on the serial number label.

In compliance with the care taken by the company to make improvements to the product whenever possible, Project Vending reserves the right to perfect future production (and the content of the related manuals) without giving prior notice and without any obligation to update products already on the market.



IMPORTANT:

- Read these instructions carefully before using the machine.
- The machine installation and maintenance operations must be carried out by qualified personnel only.
- The user must absolutely not access those machine areas whose protections are blocked with systems that require the use of tools to be removed.
- The machine is not suitable for outdoor installation, it must be placed in dry rooms with temperatures between + 1 ° C and + 40 ° C and where no water jets are used for cleaning.

- This appliance has not been designed to be used by people (including children) with reduced physical, sensory and mental abilities or lacking the necessary experience and competence, unless they are supervised or instructed to use the appliance by a person responsible for their safety. Pay special attention to children to prevent them from playing with the appliance.
- The reliability of the machine is guaranteed only through the use of original spare parts.
- To ensure correct operation, keep the machine in perfect clean conditions at all times.



Project Vending declines all responsibility for any damage that may, directly or indirectly, derive to people or things as a result of:

- Improper use of the machine;
- Incorrect installation;
- Inappropriate power supply;
- Serious deficiencies in maintenance;
- Unauthorized interventions or modifications;
- Use of non-original spare parts;
- Exceptional atmospheric events.

In the event of a breakdown, Project Vending is not committed in any way to compensate for any economic damage due to forced shutdown of the appliance or to extend the warranty period.



It is absolutely forbidden to make changes to the electrical system of the machine.

1.2. Intended use of the machine



The use of the "AYRA machine" is to be used exclusively for the diffusion in a clean environment of the sanitizing liquid supplied with the machine. The machine must be intended only for the use for which it was expressly designed and built. Any other use is to be considered improper

1.3. Guarantee



The company guarantees its machines against constructional mechanical defects for a period of 12 months. Damage resulting from improper use of the machine, such as a voltage other than that prescribed, neglected cleaning, etc. are not covered by warranty. Any technical intervention due to misuse will be the sole responsibility of the user. The manufacturer reserves the right to modify without notice the characteristics of the equipment presented in this

publication: furthermore, it declines all responsibility for possible inaccuracies attributable to printing and / or transcription errors contained in the same.

1.4. Packaging

The machine is delivered packed, in a cardboard box, The machine is supplied with:

- Installation, use and maintenance manual;
- 1 key for opening and closing the main door;
- extensible protective film that surrounds the machine.
- Power cord.

1.5. Machine identification



The identification medium is the plasticized plate on which the data to be mentioned to the manufacturer in case of need are reported, this plate is the only one recognized as valid by the manufacturer as a product identification tool.
The identification plate is placed inside the machine (see components drawing).



Do not damage, remove cover the supports necessary for the identification of the product and the safety stickers

In the event of technical problems, it is important to know how to indicate to the after-sales service the fundamental data of the machine (model, code and serial number), indicated on the label (see example of data) placed inside the machine (on the panel that supports the electronic board).



Figure 4 Identification label



1.5.1. Contacts

The Project Vending technical service is available to provide any information:

Project Vending s.r.l.

Via Risorgimento 20 - 31047 Ponte di Piave (TV) – Italia

Tel. 0422 895107 E-mail info@projectvending.it

2. COMPONENTS

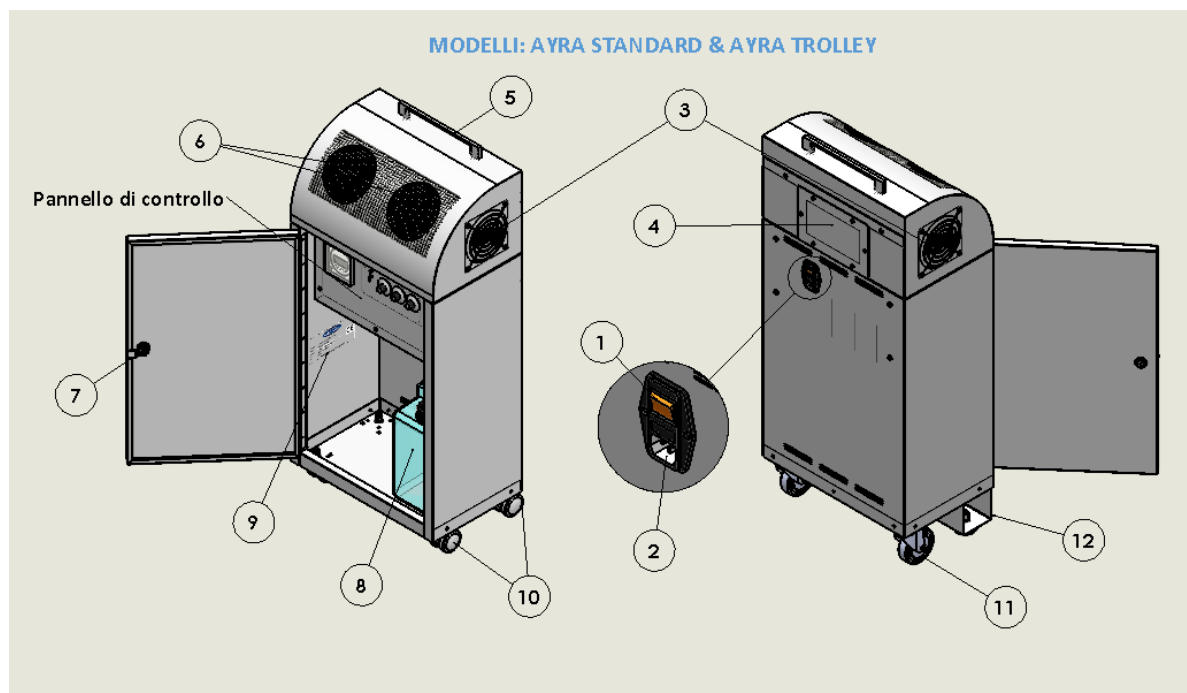


Figure 5 Ayra Standard & Trolley

2.1. Part list

1. ON / OFF BUTTON
2. POWER CABLE SOCKET
3. MACHINE FANS
4. NOZZLE CLEANING DOOR
5. TRANSPORT HANDLE
6. SANITIZING STEAM OUTLETS
7. DOOR CLOSING LOCK
8. LIQUID TANK
9. IDENTIFICATION LABEL
10. TRANSPORT WHEELS (STANDARD MODEL)
11. TRANSPORT WHEELS (TROLLEY MODEL)
12. SUPPORT BRACKET (TROLLEY MODEL)
13. TIMER
14. AUTOMATIC / MANUAL SELECTOR
15. POTENTIOMETER LIQUID QUANTITY
16. POTENTIOMETER PAUSE / WORK RATIO
17. VENTILATION REGULATION POTENTIOMETER
18. POTENTIOMETER MAIN/BATTERY

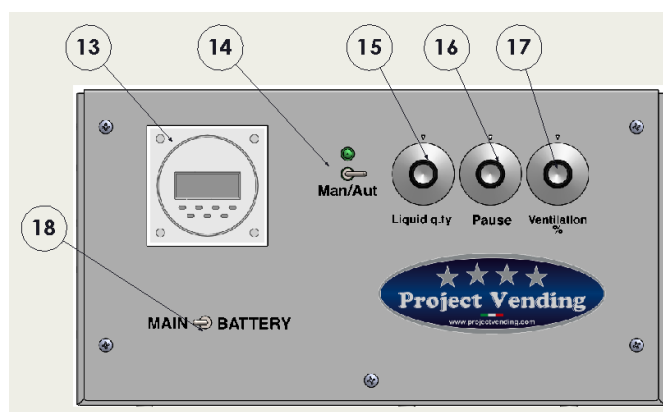


Figure 6: control panel “Standard” model and “Trolley” model

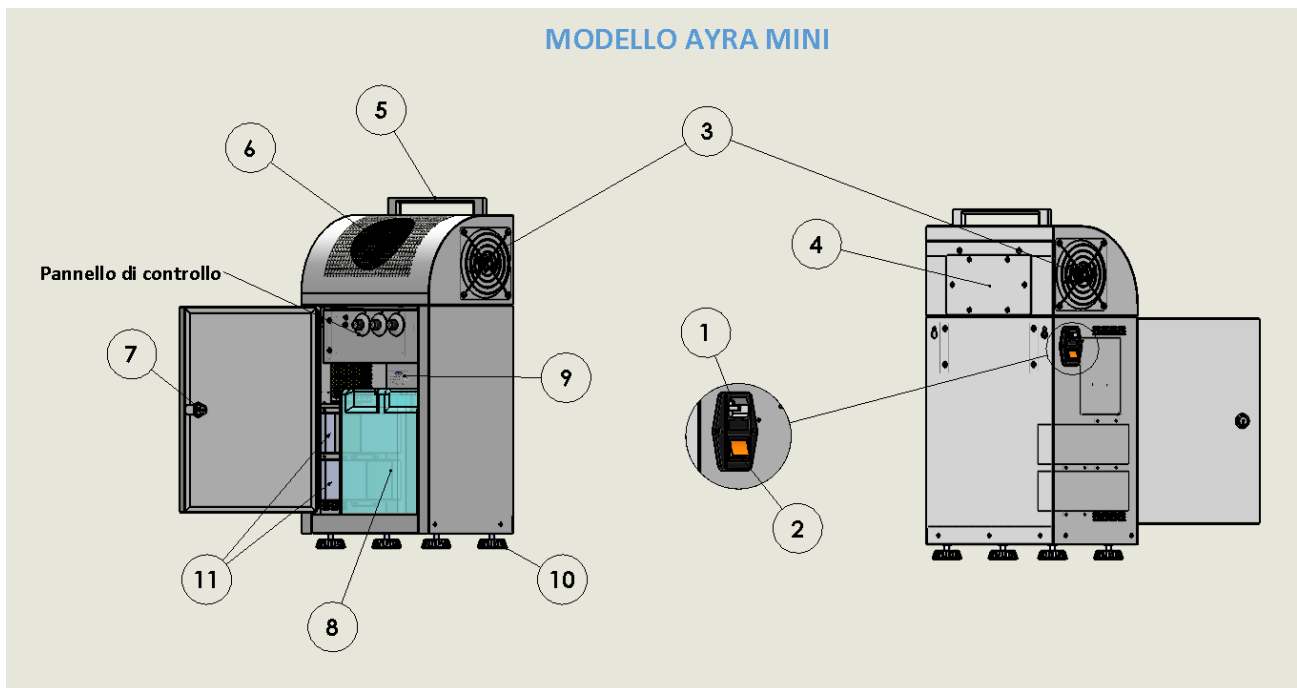


Figura 7: Ayra Mini

1. POWER ON / OFF BUTTON
2. POWER CABLE SOCKET
3. FANS
4. NOZZLE CLEANING DOOR
5. TRANSPORT HANDLE
6. SANITIZING STEAM OUTLET
7. DOOR CLOSING LOCK
8. LIQUID TANK
9. IDENTIFICATION LABEL
10. FEET
11. ON / OFF SELECTOR
12. POTENTIOMETER LIQUID QUANTITY
13. POTENTIOMETER PAUSE / WORK RATIO
14. VENTILATION REGULATION POTENTIOMETER
15. POTENTIOMETER REGULATION VENTILATION

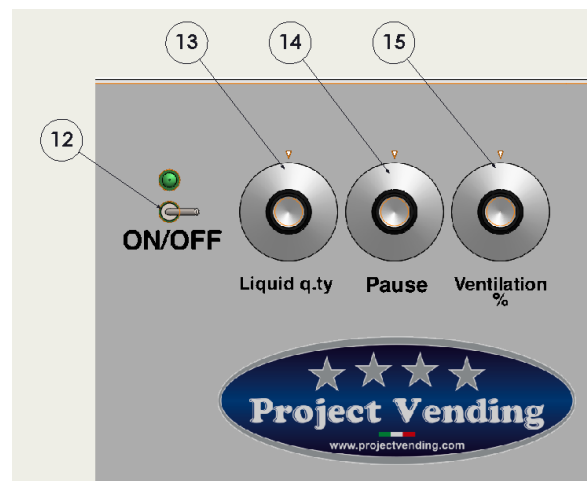


Figura 8: Control panel "Mini" model

2.2. Technical data

• MODEL	AYRA STANDARD MODEL, code: DIF-0020-R0-S		
• DIMENSIONS	HEIGH 85 cm	WIDTH 40 cm	DEPTH 25 cm
• WEIGHT	20 Kg		
• POWER SUPPLY	100V – 240V		
• POWER SUPPLY FREQUENCY	50/60 Hz		
• NOMINAL POWER	100 W		
• AUXILIARY BATTERIES (rechargeable)	2 x 12v 7ah	Duration 5 h.	

• MODEL	AYRA TROLLEY MODEL, code: DIF-0020-R0-ST		
• DIMENSIONS	HEIGH 85 cm	WIDTH 40 cm	DEPTH 25 cm
• WEIGHT	20 Kg		
• POWER SUPPLY	100V – 240V		
• POWER SUPPLY FREQUENCY	50/60 Hz		
• NOMINAL POWER	100 W		
• AUXILIARY BATTERIES (rechargeable)	2 x 12v 7ah	Duration 5 h.	

• MODEL	AYRA MINI, codice: DIF-0020-R0-M-100/240		
• DIMENSIONS	HEIGH 53,5 cm	WIDTH 30 cm	DEPTH 20 cm
• WEIGHT	6 Kg		
• POWER SUPPLY	100V – 240V		
• POWER SUPPLY FREQUENCY	50/60 Hz		
• NOMINAL POWER	100 W		
• AUXILIARY BATTERIES (rechargeable)	1 x 12v 2,2ah	Duration 2 h.	Only on request

3. TRANSPORT AND HANDLING

Transport of the machine must be completed by expert personnel, careful to avoid overturning.

Furthermore, it must be kept in a vertical position when moving.

Pay particular attention to the handling of the same to avoid accidents to the personnel who transport it (eg: muscle tears, hernias, etc.).

For storage, it is important to always keep the machines in a vertical position and if the tank with the liquid is contained within them, in environments with temperatures not below + 1 ° C.

3.1. Warnings for storage

Should it be necessary to store the machine and cover the machine after having parked it in a protected environment and avoid accidental movement or impact. It is forbidden to stack several packaged machines. Maintain the vertical position indicated by the arrows on the packaging itself.

3.2. Removing the packaging and checking the contents

- remove the cardboard corners and check the integrity of the appliance;
- open the door remove the accessories in the product withdrawal compartment.





The packaging materials must not be left within reach of strangers, especially children, as they are potential sources of danger.

4. INSTALLATION / POSITIONING AND FIRST TIME USE OF THE MACHINE

The installation of the machine must take place in a sheltered area, avoiding direct exposure to the sun and places where water jets are used (for example large kitchens). The machine must be placed on a perfectly level surface and able to safely support its weight.

For correct operation, the side grille must be completely free (at least 40 cm of space)

	 <p>Figure 9 grid</p>	<p>Do not remove the protection of the side grids, danger of cutting Warning! Incorrect ventilation can compromise good operation.</p>
---	--	--

4.1. Frost resistance




The machine is not suitable for outdoor installation, it must be placed in dry rooms with temperatures between + 1 ° C and + 50 ° C.


If the appliance is placed in a room exposed to the risk of frost, it must be completely emptied.

Remove the sanitizing liquid container, then let the residual sanitizing agent flow into the circuit, letting the machine work for a few seconds without the sanitizing liquid.

When restarting after a pause, proceed as described at the beginning of this point.

4.2. Electrical connection

	<p>Any type of socket not compatible with the appliance plug must be replaced. Do not use reductions or adapters.</p>	
 <p>Figure 10 power switch</p>	 <p>Figure 11 power cord</p>	

	<p>Check that the system capacity is adequate for the maximum power of the machine indicated on the plate. In case of doubt, contact professionally qualified personnel. The latter, in particular, must also ensure that the section of the system cables is suitable for the power absorbed by the machine itself.</p>
---	--



The appliance must be connected to an earthed power supply in compliance with current legislation. It is recommended that the power supply network of the machine be equipped with a disconnection device with a contact opening of at least 3 mm. Leave the plug accessible after installation.

The use of extensions, adapters or multiple sockets is prohibited.

Check that the grounding system of the electrical circuit to which it was decided to connect the machine is efficient and complies with electrical safety regulations.

Make sure that the mains voltage corresponds to that marked on the plate label (located in the machine (as described in par. 1.5) and that the capacity of the socket is suitable for the current absorbed by the appliance.

4.3. Liquid Canister installation

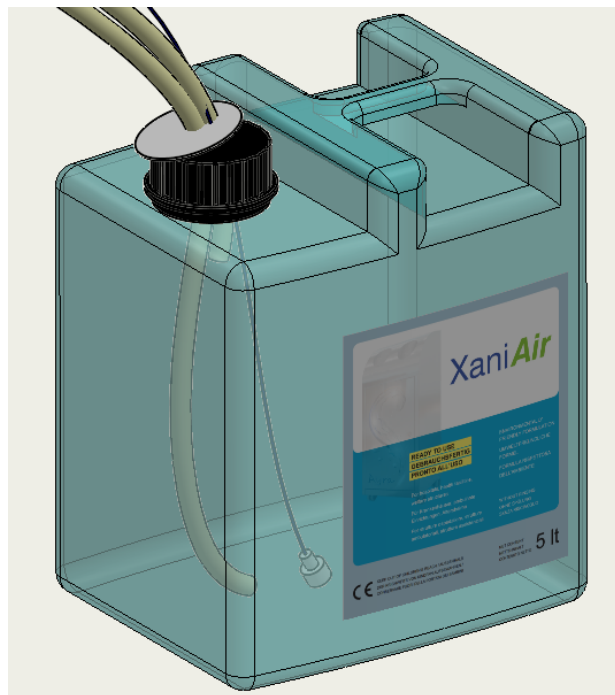


Figura 12: XaniAir Canister



The operation of loading the tank containing the liquid must take place with the machine off to prevent the diffusion system from remaining in operation.

Open the door and place the XaniAir product canister on the bottom of the machine. Unscrew the cap and insert, the 2 two tubes and the level sensor (only for the models with level sensor) until the ring nut is laid

on the top of the canister (fig.12). Make sure that the “longer” suction tube and the lever sensor (if included) is inserted until it touches the bottom of the canister.

4.4. Ignition Procedure

- Connect the power supply.
- To position the Man/Aut selector to “Man” (only for Standard & Trolley models)
- Turn on the Ayra machine with the switch on the back of the machine (fig.10);
After a few seconds, the liquid will rise in the suction tube. If this does not happen, turn the “Ventilation” knob to clockwise, to keep it higher than 0.
- When the liquid has reached the nozzle (steam only escapes and no more air), proceed with the preferred intensity and ventilation mode (as described below)



Figure 13 Control panel

4.5. Operation of the machine



In order for the machine to function correctly, the machine must be placed level.
Do not power the machine if it is placed in a reclined manner

The dispensing of the sanitizing liquid is very simple and takes place according to the following procedure:

- 1) Use the **ventilation** knob to adjust the air flow;
- 2) In the machines without a timer, the selector has the On / Off function of the machine.

4.5.1. Machine adjustment



POTENTIOMETER LIQUID Q.TY		POTENTIOMETER PAUSE	
1	Small closed environments, where there is no passage of people	1	Environments less than 100m ³
2	Small closed environments, where few people entered	2	Rooms of 250m ³
3	Small / medium environments where there is a modest passage of people	3	Rooms of 450m ³
4	Medium-sized environments where there is passage of people	4	Rooms of 600m ³
5	Medium-sized environments where there is passage of people and communicating doors have opened with unhygienic environments	5	Rooms of 800m ³
6	Medium-sized environments where there is a consistent passage of people and communicating doors have opened with unhygienic environments	6	Spaces of 1000 m ³
7	Medium / large environments where there is a consistent passage of people and communicating doors have opened with unhygienic environments	7	Spaces of 1100 m ³
8 max	Large environments where there is a consistent passage of people and there are French windows in contact with unhygienic environments	8 max	large spaces from 1400 m ³ and over.

4.5.1.1. "Daily" setting:

To be used for constant sanitization of the room throughout the day. The machine will autonomously regulate the emission of sanitizing liquid based on the set setting.

Position the two potentiometers "LIQUID Q.TY" and "PAUSE", as indicated in the following table, according to the environment to be sanitized:

4.5.1.2. “Fast” setting:

To be used for sanitizing a designated room as quickly as possible:

Set the “LIQUID Q.TY” and “PAUSE” potentiometers to the maximum level, turning them fully clockwise. Leave the room to sanitize the appropriate time based on the square footage, as indicated in the following table:

m³ ENVIRONMENT	TIME REQUIRED SANITIZATION
Up to 100	30 min.
More than 100 up to 200	1 hours
More than 200 up to 400	2 hours
More than 400 up to 600	3 hours
More than 600 up to 900	5 hours
More than 900 up to 1300	6/7 hours
More than 1300	8 hours

4.6. Timer Setting: “Aut” Mode (only for the models where it’s included)

The timer program will work if the selector Man/Aut is positioned on “Aut”.

4.6.1. Set the current time

- 1) Press and hold the clock button.
- 2) Then press the D + button to select the current day of the week as displayed on the LCD
- 3) Press the H + and M + buttons to select the current hour and minute
- 4) Release button D + and the current time is displayed on the LCD display.



Figure 14 Timer

4.6.2. Set the period of operation

For the purposes of programming the operating period, the "Timer" must be programmed following the following procedure:

- 1) Press the "P" button until 1 and **ON** appear on the display.
- 2) Release the button.
- 3) This is Program 1 and **ON** that turns on the machine.
- 4) Then press the **D+** button to select the day (s) of the week for program 1 **ON**.
- 5) Press the **H +** and **M +** buttons to select Hours and minutes for Program 1 **ON**.
- 6) Press the P button to visualize 1 and **OFF** appear on the display, to turns off the machine
- 7) Press the D+ button to select the same day of 1 ON program
- 8) Press the button H+ and M+ to select the hours and minutes for 1 OFF program
- 9) Repeat the same procedure for all the other days it takes

Even if the machine is working on "Aut" mode, the timer is bypass if pushing the button "man" on timer itself.

4.6.3. Inactivity

In anticipation of a long stop of inactivity of the machine, appropriate precautions must be taken so that no dangerous situations are created at start-up; long stay means a period of complete inactivity, exceeding one month. In the case of long periods of rest it is necessary:

- 1) Thoroughly clean the machine and dry it;
- 2) operate the operation without liquid for a few seconds, in order to empty the circuit;
- 3) Check it carefully and replace the damaged or worn parts;
- 4) Check the readability of the plate data;
- 5) Cover the machine after having parked it in a protected environment;
- 6) The timer is equipped with a rechargeable battery, after a period of inactivity the battery may be discharged and the machine activity times must be reprogrammed.

Restarting the machine must be carried out in accordance with paragraph "4 Installation"



Operating instructions
Ayra machines

REV 2 11.09.2020

Pagina 17 di 32



4.7. Main/Battery selector (only for the models where it's included).

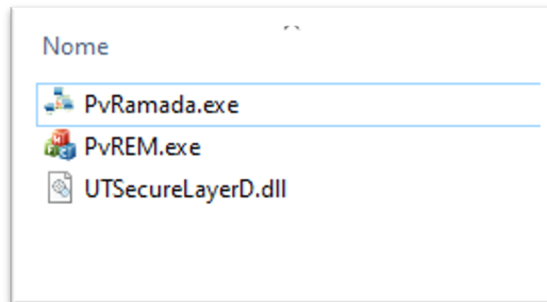
While the machine is working with the power supply wire, the selector can be positioned indifferently on "Main" or Battery", the battery will be on charged however.

When the power supply is disconnected, if the selector is positioned on "Main", the machined will turn off. If the selector is on "Battery" the machine will work with battery supply. Connect the machine to the power line supply to recharge the battery.

5. REMOTE CONTROL OF AYRA SANITIZER. QUICK ADJUSTMENTS

For remote control of Ayra machines, we provide two dedicated apps:

- PvRem: for the first time settings to do only once, with the micro USB cable
- PvRamada: To control operations remotely via Wifi.

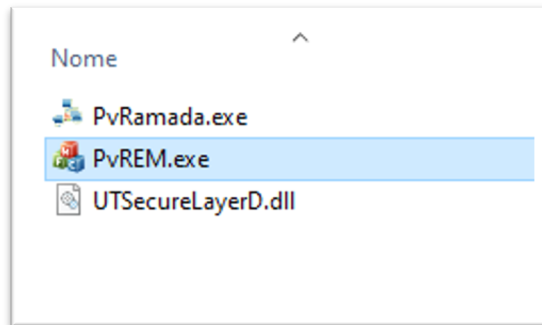


For the first connectivity programming of an Ayra machine, it is necessary to connect the micro USB cable to the network card on the back of the machine, by removing the rubber cap, or unscrewing the four screws of the plastic casing.

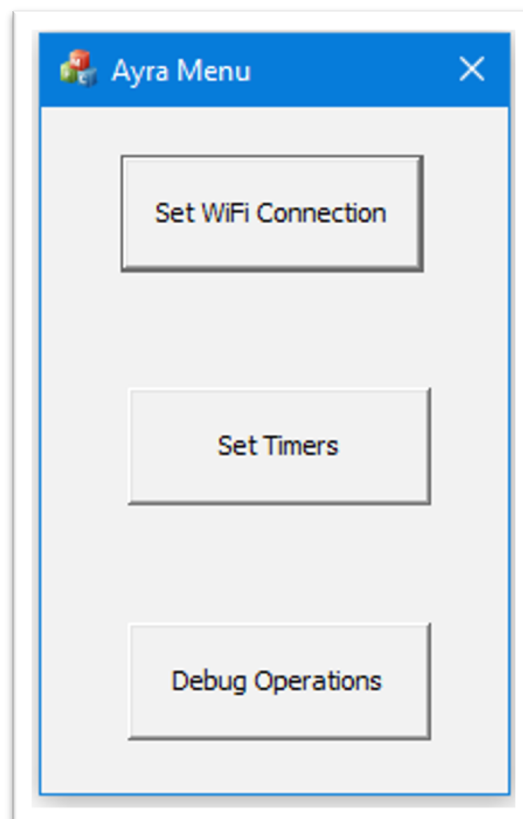


5.1. App PvRem

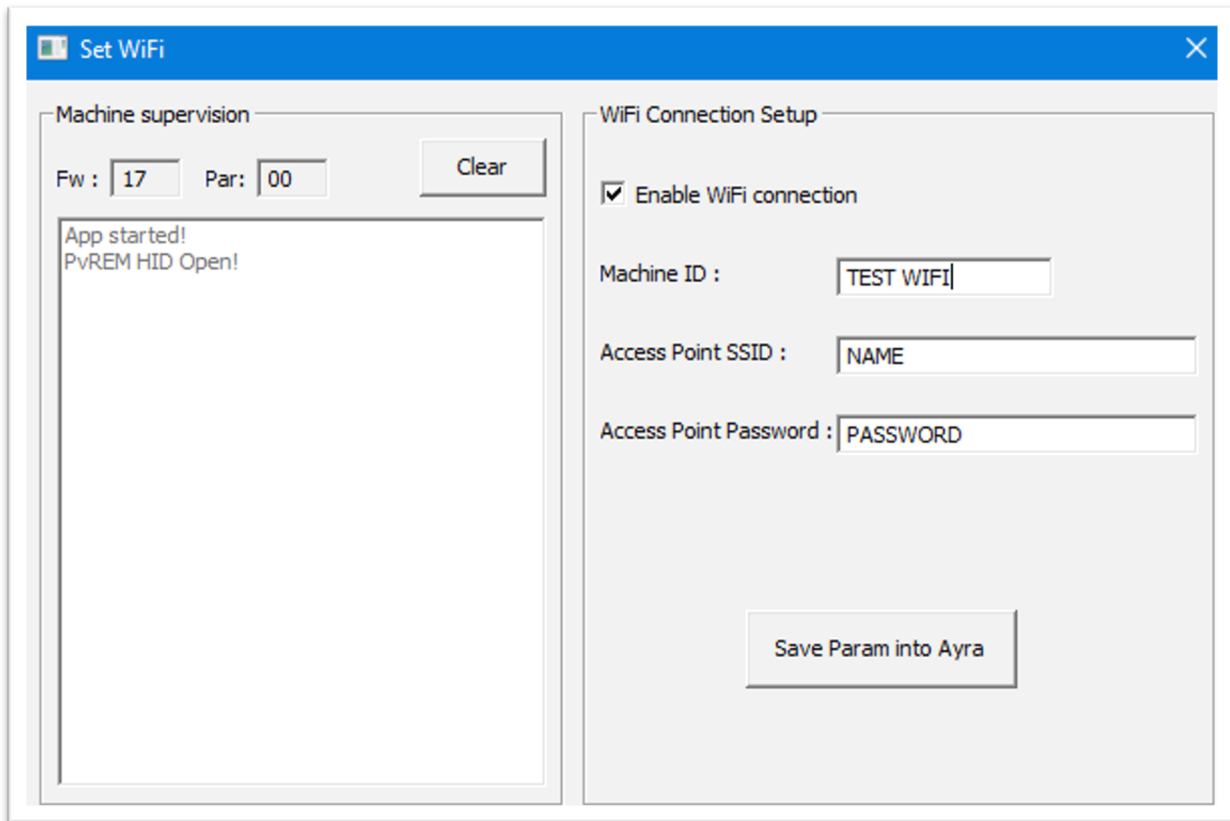
Once connected, open the PvREM.exe App. make sure that the file "UTSecureLayerD.dll" is in the same folder, otherwise the app does not work.



The first window has three selectable buttons, first click on "Set WiFi Connection"



The following window appears. Put the flag next to “Enable WiFi Connection”.



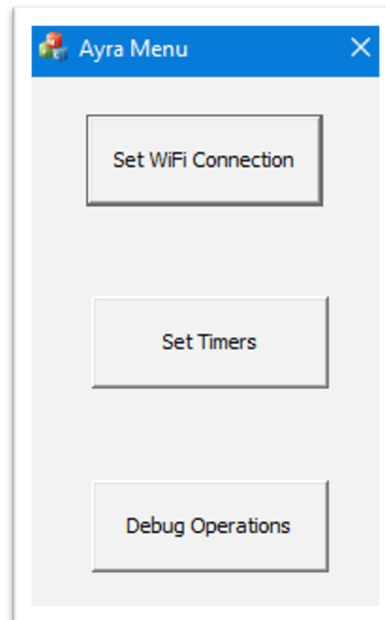
Then enter a name to identify the machine in the "Machine ID" field (Max. 10 characters).

Enter the name of your WiFi network in the “Access Point SSID” field.

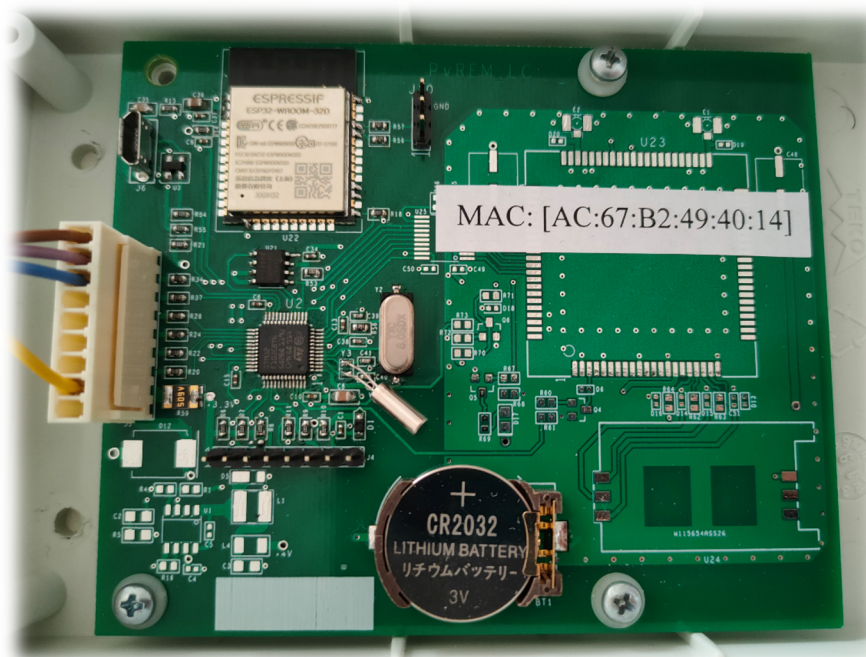
Enter the network password in the “Access Point Password” field.

Save the parameters by clicking on “Save Param Into Ayra” and close the window.

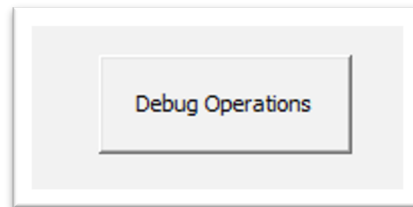
At this point you can set the operating timers by clicking on "Set Timers", or you can do it later via WiFi with the "PvRamada" App. In this tutorial, it will be shown later by PvRamada app.



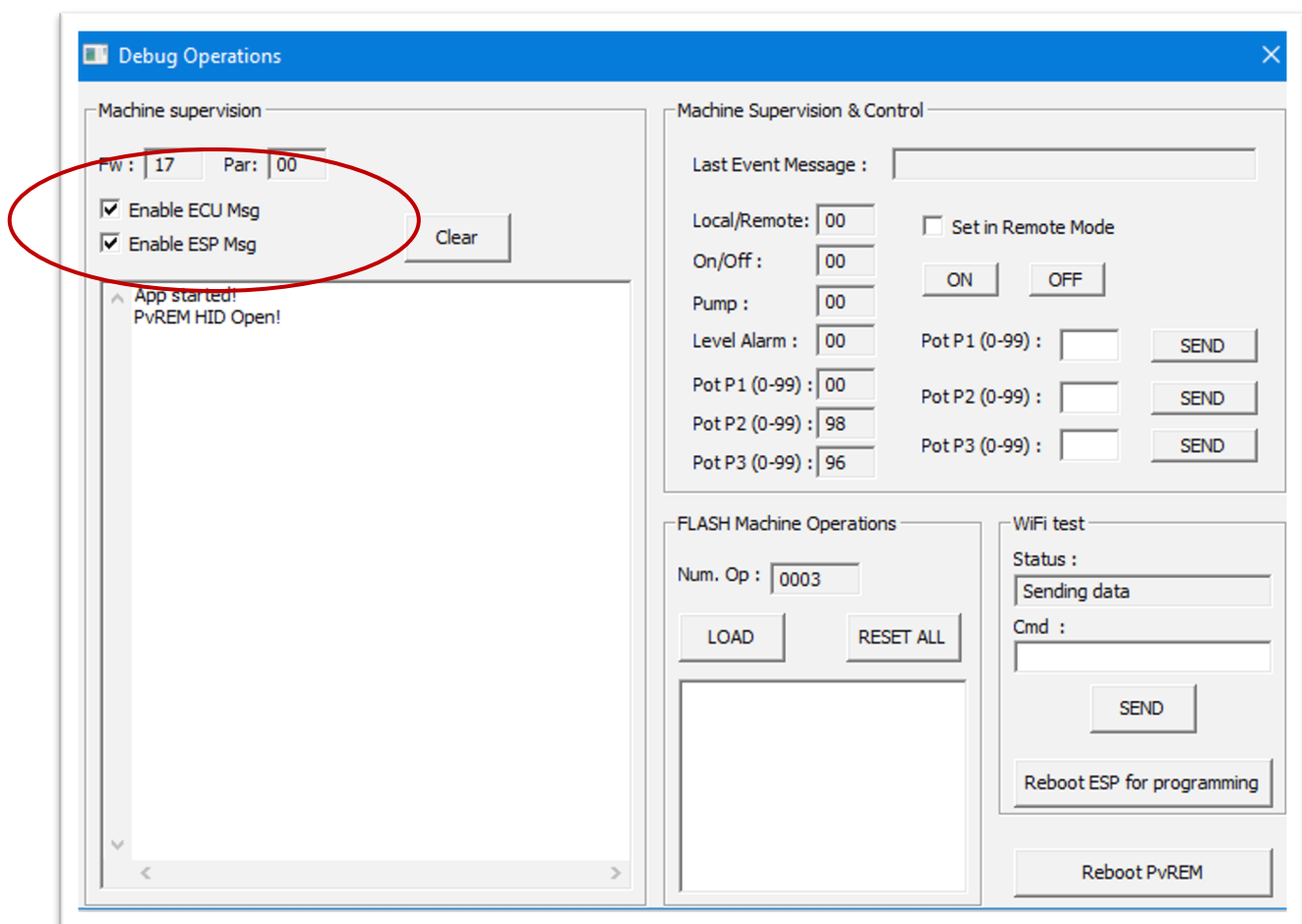
To allow the network to see the machine, you need to assign a MAC or IP address. The MAC address of the network card is shown on it and it's located into the plastic casing outside the machine, which can be read by unscrewing the half-shell. It must be set in the router parameters.



Otherwise, you can read the IP of the card with another method: click on "Debug Operation" on the main window.



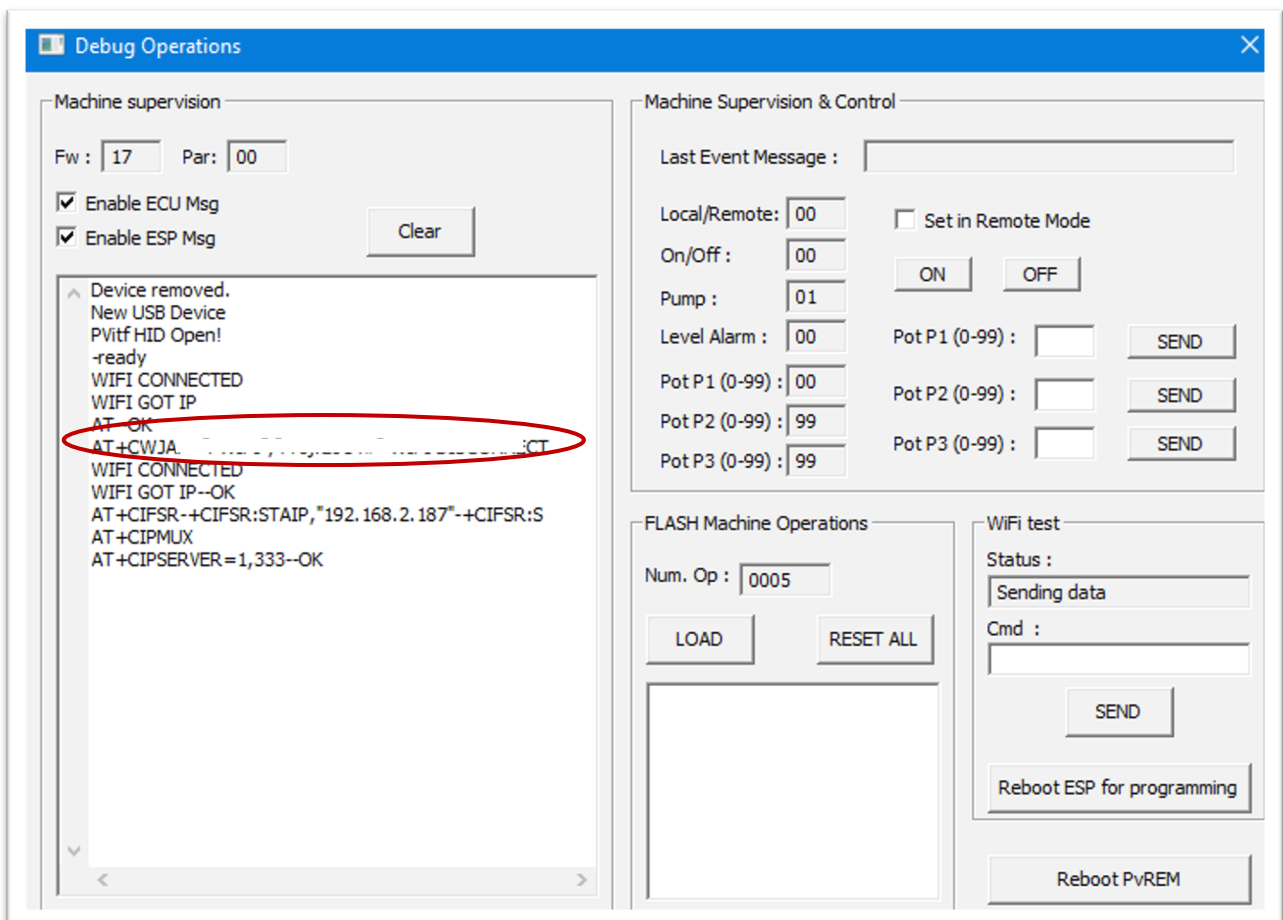
The following window appears. Put the two flags on "Enable ECU Msg" and "Enable SEP Msg".



At this point, turn off the machine, switching off the main ON / OFF button and wait few seconds.



Once turned on again, on the left screen of the windows, some messages appear, including the IP address. This must be copied down in the next setting of the "PvRamada" app.



Debug Operations

Machine supervision

Fw : 17 Par: 00

Enable ECU Msg

Enable ESP Msg

Clear

Device removed.
New USB Device
PvItf HID Open!
-ready
WIFI CONNECTED
WIFI GOT IP
AT+OK
AT+CWJAP="192.168.2.187";CT
WIFI CONNECTED
WIFI GOT IP--OK
AT+CIFSR="+CIFSR:STAIP,"192.168.2.187"+CIFSR:S
AT+CIPMUX
AT+CIPSERVER=1,333--OK

Machine Supervision & Control

Last Event Message :

Local/Remote: 00 Set in Remote Mode

On/Off : 00 ON OFF

Pump : 01

Level Alarm : 00 Pot P1 (0-99) : SEND

Pot P1 (0-99) : 00 Pot P2 (0-99) : SEND

Pot P2 (0-99) : 99 Pot P3 (0-99) : SEND

Pot P3 (0-99) : 99

FLASH Machine Operations

Num. Op : 0005

LOAD RESET ALL

WiFi test

Status :
Sending data

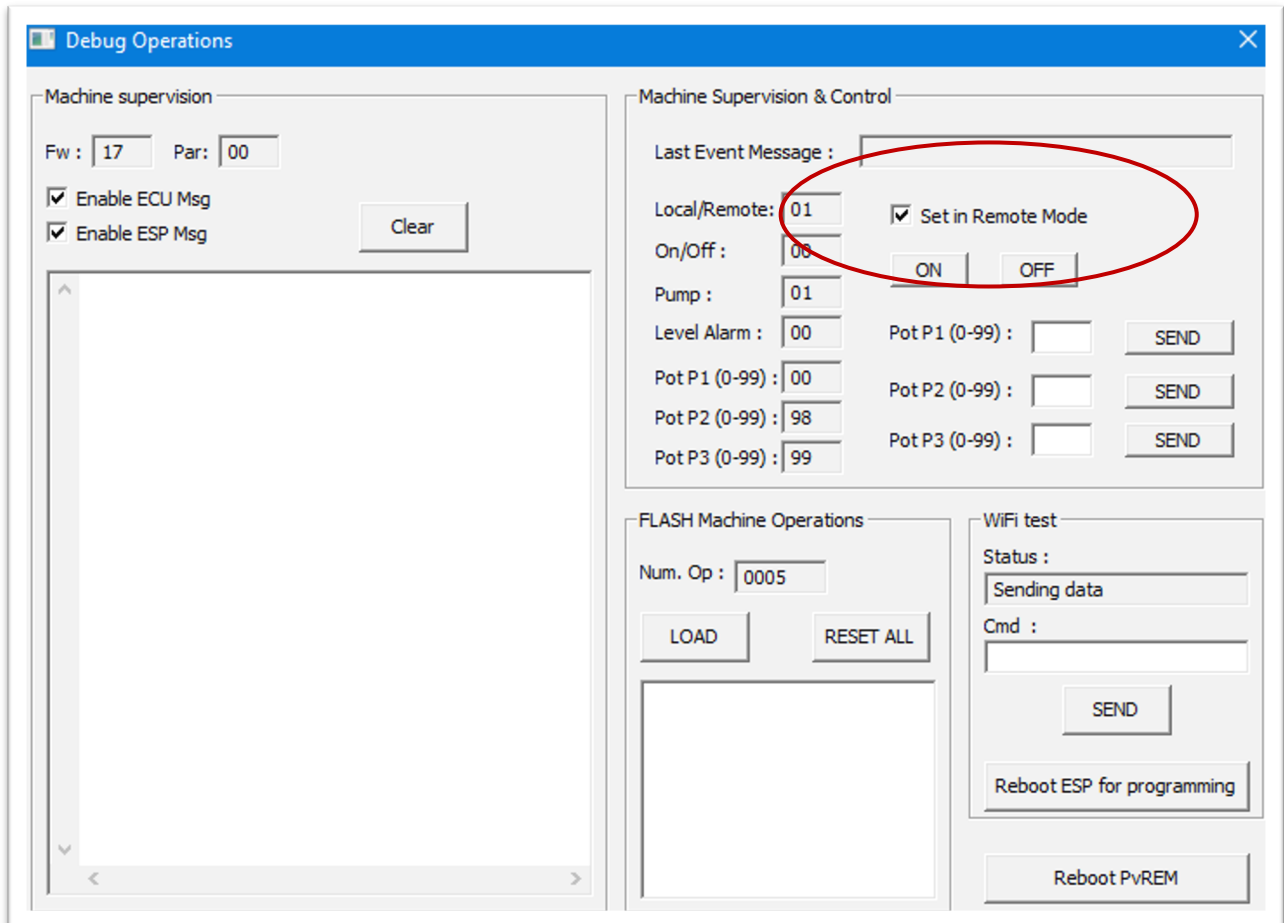
Cmd :
SEND

Reboot ESP for programming

Reboot PvREM

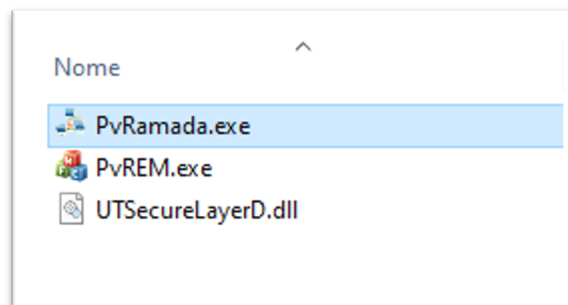
Before switching to wireless mode, it is possible to do a quick test about the machine / app association.

Still from the “Debug Operation” window, set the flag to “Set in remote mode”, then click ON. The machine should start up. If it doesn’t happen, check if the machine’s power button is actually turned on and repeat the previous steps.



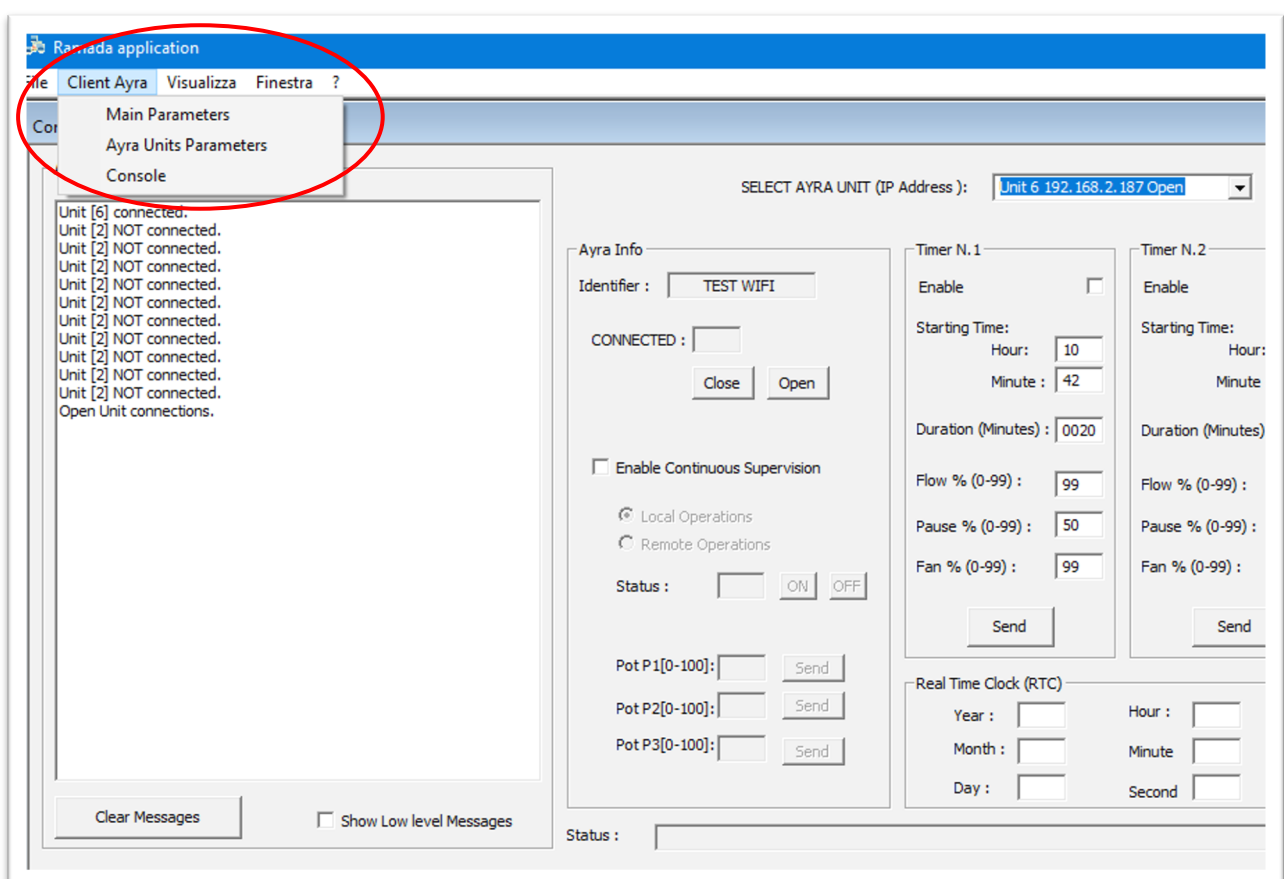
If the machine starts, the test is passed, so remove the flag and close the “Debug Operations” window.

5.2. App PvRamada

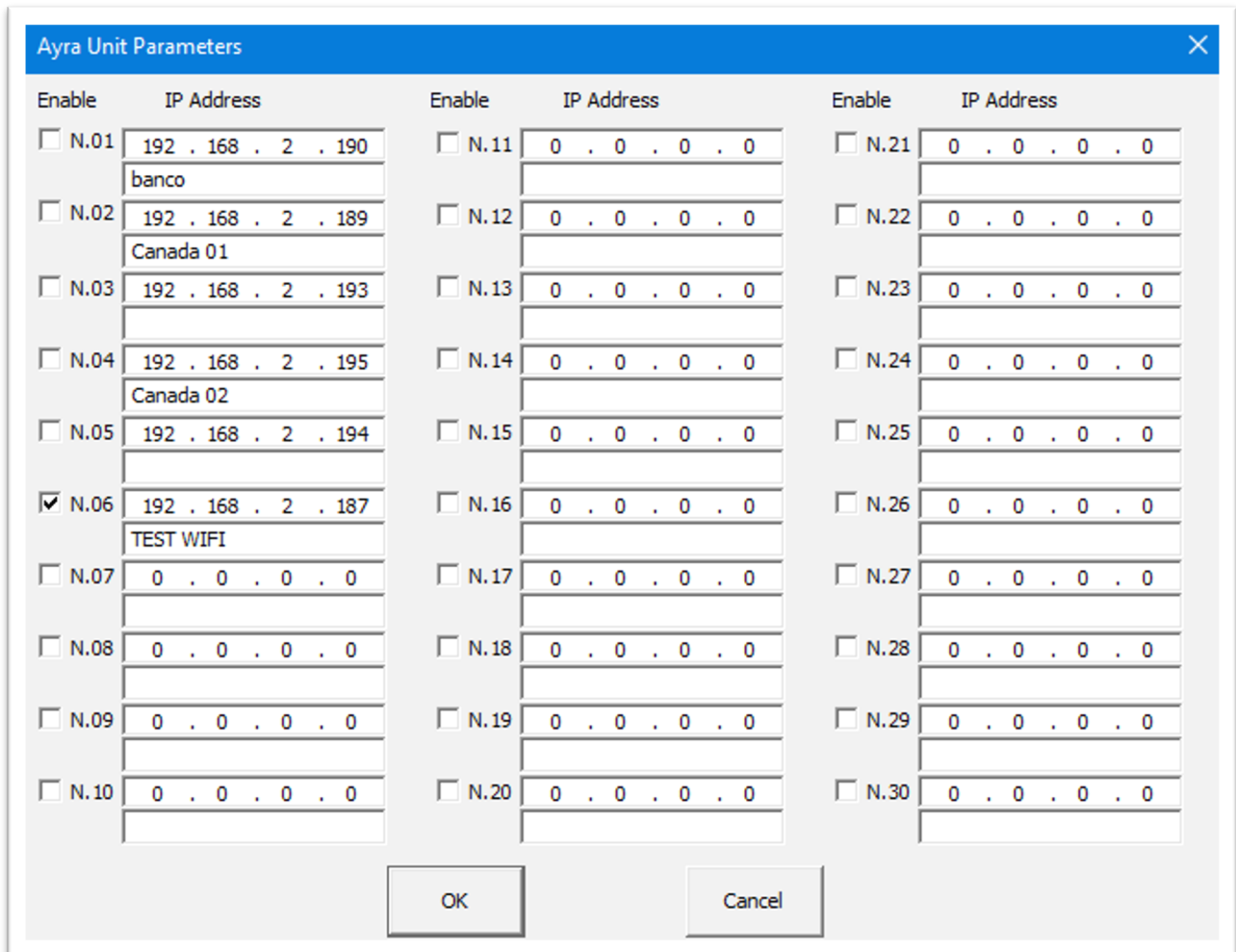


Open the app “PvRamada”.

First, select “Client Ayra” and then “Ayra Unit Parameters” from the drop-down menu.



The following window appears, there are all the IP addresses of the machines previously registered. It must be selected with the flags those you want to control from the app.



Enable	IP Address	Enable	IP Address	Enable	IP Address
<input type="checkbox"/>	N.01 192 . 168 . 2 . 190 banco	<input type="checkbox"/>	N.11 0 . 0 . 0 . 0	<input type="checkbox"/>	N.21 0 . 0 . 0 . 0
<input type="checkbox"/>	N.02 192 . 168 . 2 . 189 Canada 01	<input type="checkbox"/>	N.12 0 . 0 . 0 . 0	<input type="checkbox"/>	N.22 0 . 0 . 0 . 0
<input type="checkbox"/>	N.03 192 . 168 . 2 . 193	<input type="checkbox"/>	N.13 0 . 0 . 0 . 0	<input type="checkbox"/>	N.23 0 . 0 . 0 . 0
<input type="checkbox"/>	N.04 192 . 168 . 2 . 195 Canada 02	<input type="checkbox"/>	N.14 0 . 0 . 0 . 0	<input type="checkbox"/>	N.24 0 . 0 . 0 . 0
<input type="checkbox"/>	N.05 192 . 168 . 2 . 194	<input type="checkbox"/>	N.15 0 . 0 . 0 . 0	<input type="checkbox"/>	N.25 0 . 0 . 0 . 0
<input checked="" type="checkbox"/>	N.06 192 . 168 . 2 . 187 TEST WIFI	<input type="checkbox"/>	N.16 0 . 0 . 0 . 0	<input type="checkbox"/>	N.26 0 . 0 . 0 . 0
<input type="checkbox"/>	N.07 0 . 0 . 0 . 0	<input type="checkbox"/>	N.17 0 . 0 . 0 . 0	<input type="checkbox"/>	N.27 0 . 0 . 0 . 0
<input type="checkbox"/>	N.08 0 . 0 . 0 . 0	<input type="checkbox"/>	N.18 0 . 0 . 0 . 0	<input type="checkbox"/>	N.28 0 . 0 . 0 . 0
<input type="checkbox"/>	N.09 0 . 0 . 0 . 0	<input type="checkbox"/>	N.19 0 . 0 . 0 . 0	<input type="checkbox"/>	N.29 0 . 0 . 0 . 0
<input type="checkbox"/>	N.10 0 . 0 . 0 . 0	<input type="checkbox"/>	N.20 0 . 0 . 0 . 0	<input type="checkbox"/>	N.30 0 . 0 . 0 . 0

Now add the IP address previously get by the PvRem app, select the flag and press "OK"

Then click on the drop-down menu "SELECT AYRA UNIT (IP Address)" and select the IP address which you want to set at this time

Ramada application
le Client Ayra Visualizza Finestra ?

Console Client Ayra

Ayra Communication Messages

Unit [2] NOT connected.
Unit [2] NOT connected.
Unit [2] NOT connected.
Open Unit connections.

SELECT AYRA UNIT (IP Address): None

Ayra Info	Timer N. 1	Timer N. 2	Timer N. 3
Identifier : <input type="text"/> CONNECTED : <input type="checkbox"/> <input type="button" value="Close"/> <input type="button" value="Open"/> <input type="checkbox"/> Enable Continuous Supervision <input checked="" type="radio"/> Local Operations <input type="radio"/> Remote Operations Status : <input type="checkbox"/> ON <input type="checkbox"/> OFF Pot P1[0-100]: <input type="text"/> <input type="button" value="Send"/> Pot P2[0-100]: <input type="text"/> <input type="button" value="Send"/> Pot P3[0-100]: <input type="text"/> <input type="button" value="Send"/>	Enable <input type="checkbox"/> Starting Time: Hour: <input type="text"/> Minute: <input type="text"/> Duration (Minutes) : <input type="text"/> Flow % (0-99) : <input type="text"/> Pause % (0-99) : <input type="text"/> Fan % (0-99) : <input type="text"/> <input type="button" value="Send"/>	Enable <input type="checkbox"/> Starting Time: Hour: <input type="text"/> Minute: <input type="text"/> Duration (Minutes) : <input type="text"/> Flow % (0-99) : <input type="text"/> Pause % (0-99) : <input type="text"/> Fan % (0-99) : <input type="text"/> <input type="button" value="Send"/>	Enable <input type="checkbox"/> Starting Time: Hour: <input type="text"/> Minute: <input type="text"/> Duration (Minutes) : <input type="text"/> Flow % (0-99) : <input type="text"/> Pause % (0-99) : <input type="text"/> Fan % (0-99) : <input type="text"/> <input type="button" value="Send"/>

Real Time Clock (RTC)

Year : Hour :
 Month : Minute :
 Day : Second :

Status :

SELECT AYRA UNIT (IP Address): Unit 6 192.168.2.187 Open

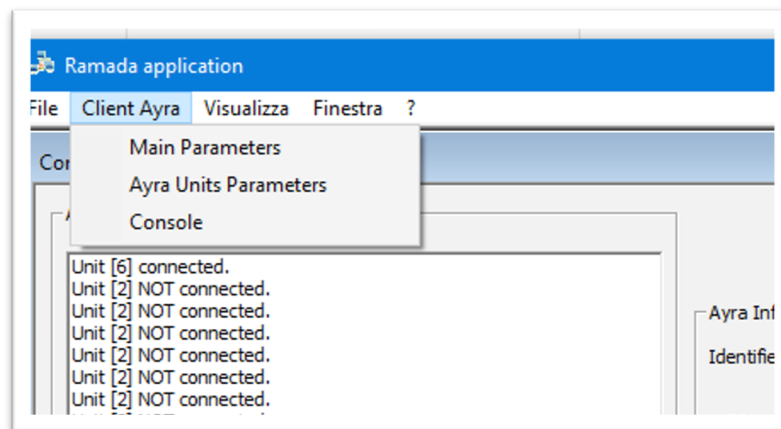
Ayra Info	Timer N. 1	Timer N. 2	Timer N. 3
Identifier : <input type="text" value="TEST WIFI"/> CONNECTED : <input type="checkbox"/> <input type="button" value="Close"/> <input type="button" value="Open"/> <input type="checkbox"/> Enable Continuous Supervision <input checked="" type="radio"/> Local Operations <input type="radio"/> Remote Operations Status : <input type="checkbox"/> ON <input type="checkbox"/> OFF Pot P1[0-100]: <input type="text"/> <input type="button" value="Send"/> Pot P2[0-100]: <input type="text"/> <input type="button" value="Send"/> Pot P3[0-100]: <input type="text"/> <input type="button" value="Send"/>	Enable <input type="checkbox"/> Starting Time: Hour: <input type="text" value="10"/> Minute: <input type="text" value="42"/> Duration (Minutes) : <input type="text" value="0020"/> Flow % (0-99) : <input type="text" value="99"/> Pause % (0-99) : <input type="text" value="50"/> Fan % (0-99) : <input type="text" value="99"/> <input type="button" value="Send"/>	Enable <input type="checkbox"/> Starting Time: Hour: <input type="text" value="00"/> Minute: <input type="text" value="00"/> Duration (Minutes) : <input type="text" value="0000"/> Flow % (0-99) : <input type="text" value="00"/> Pause % (0-99) : <input type="text" value="00"/> Fan % (0-99) : <input type="text" value="00"/> <input type="button" value="Send"/>	Enable <input type="checkbox"/> Starting Time: Hour: <input type="text" value="00"/> Minute: <input type="text" value="00"/> Duration (Minutes) : <input type="text" value="0000"/> Flow % (0-99) : <input type="text" value="00"/> Pause % (0-99) : <input type="text" value="00"/> Fan % (0-99) : <input type="text" value="00"/> <input type="button" value="Send"/>

Real Time Clock (RTC)

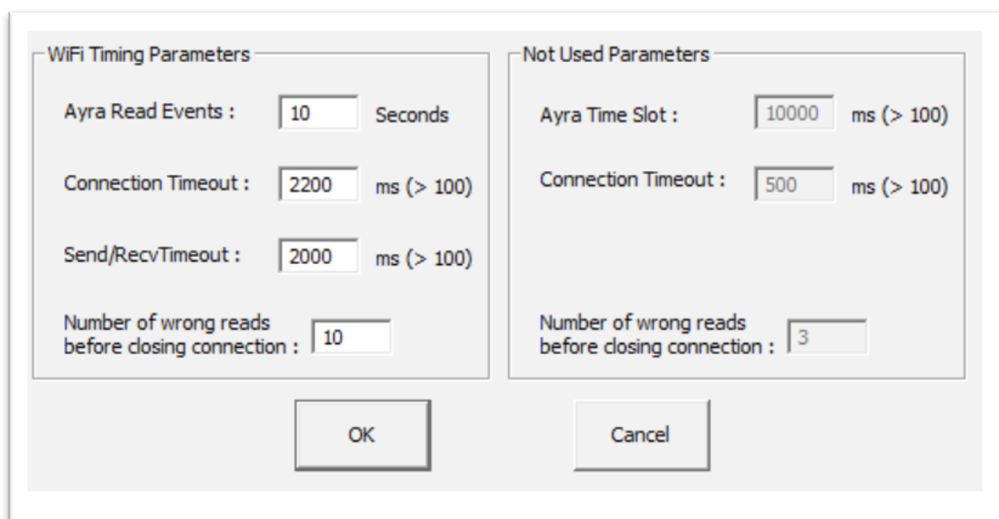
Year : Hour :
 Month : Minute :
 Day : Second :

Status :

Now click on "Main Parameters" from the "Client Ayra" menu

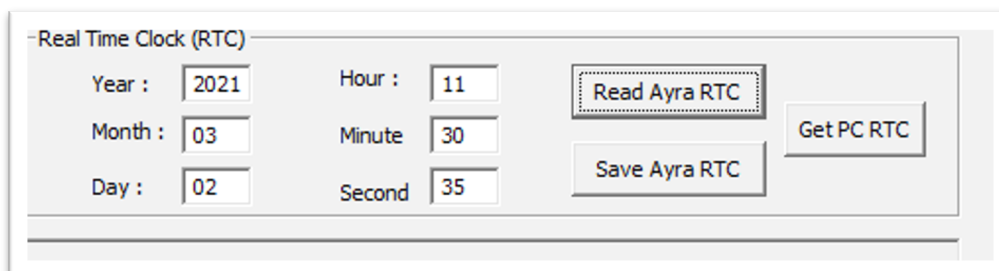


Set the following parameters and confirm with "OK"

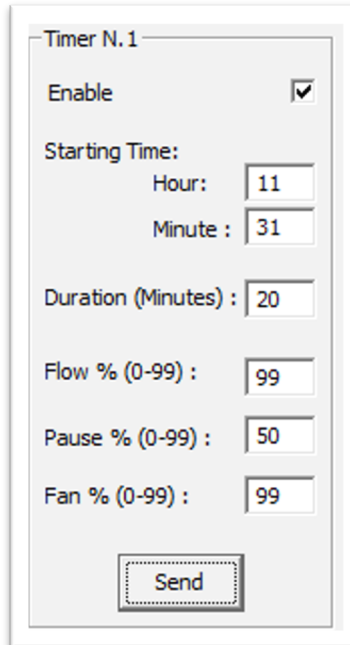


It is now possible to set the desired timers.

First, set the current time by selecting "Get PC RTC" to get the time from the PC. If it is correct click on "Save Ayra RTC". Press "Read Ayra RTC" whenever you want to check the time in the Ayra's memory.



To set the timer (max. three), select one of them with the flag, set the desired start-up time on “Hours” and “Minute” fields, and indicate the duration of working time in the field “Duration”.



Timer N. 1

Enable

Starting Time:

Hour:

Minute:

Duration (Minutes):

Flow % (0-99):

Pause % (0-99):

Fan % (0-99):

Then set the three fields "Flow", "Pause" and "Fan", which correspond to the potentiometers on the physical panel of the machine. WE RECOMMEND TO KEEP THE "FAN" POTENTIOMETER ALWAYS AT 99%.

The fields are indicated in%, so “0” corresponds to the potentiometer turned to the minimum, “50” to the half and “99” to the maximum. Once the desired setting has been set, click on “Send” to confirm.

6. SAFETY WARNINGS

The construction and safety analysis of the machine refer to current standards and correct installation and maintenance procedures. Any intervention other than ordinary maintenance must be carried out with the power plug disconnected. In the vicinity of the machine it is mandatory to use suitable clothing as indicated in this manual and by the laws in force in the country where the machine is used; loose and fluttering dresses, belts, rings and chains should be avoided in any case; the hair, if long, must be collected in a special cap. It is absolutely forbidden to operate the machine with the fixed and / or mobile guards removed or with the safety devices excluded. It is absolutely forbidden to remove or tamper with the safety devices. Do not carry out any maintenance or adjustment of the machine without having read and assimilated the contents of this manual. Adjustment operations with reduced or partially excluded safety devices must be carried out by one person only and, during their execution, access to the machine must be prohibited to unauthorized persons.

Make sure the safety labels are in good condition and study their meaning: they are necessary to avoid injuries; if these are damaged, lost or belong to replaced components, they must be replaced with other originals requested from the Manufacturer, placing them in the exact position as indicated in this manual. It is good to remember that during use or maintenance, a prudent operator in good physical and mental condition is the best safety against any injury



In case of fire do not use jets of water against the machine as they could cause short circuits with consequent serious accidents for the people present.









Any intervention other than ordinary maintenance must be carried out with the power plug disconnected.

6.1. Child safety




Keep the packaging material of the appliance out of the reach of children.
Do not allow children to play with the machine.
Keep the sanitizing and regenerating liquid out of the reach of children.

7. MAINTENANCE AND CLEANING

	Disconnect the power cord to the mains
	Press the main switch (1) to the "0" position.
	Extraordinary maintenance, repair and adjustment operations must be carried out by authorized technical personnel
	Cleaning operations must be carried out with the machine disconnected from all energy sources (machine in safety mode).
	After maintenance and / or cleaning, make sure that no foreign objects remain inside the machine.
	The use of water jets for cleaning the machine of any size and direction is prohibited.

8. DISPOSAL

For a possible demolition of the machine, it is recommended to disassemble the device by dividing its parts according to the nature of the construction material (plastic, metal, paper, etc.). Entrust the disposal of all the parts thus obtained to authorized companies.

	The machine was produced with recyclable material. At the time of demolition, proceed according to the local regulations for waste disposal. Make the machine unusable by cutting the power cord. To avoid dangerous situations (e.g. danger of suffocation) for children, break the door lock so that it can no longer be closed.
---	--